

Low Profile Conveyors

HydroClean Series

- » **Stainless steel, sanitary design**
- » **Unique pull-pin based tool-less belt, drive, and tail removal** for in-depth cleaning, watch the video at qcconveyors.com/hydrocleanvideo
- » **V-Guided Belts** to ensure positive tracking in most environments and applications. Options include accumulation, totally encapsulated and anti-microbial belting.
- » **NSF and BISSC Certified**

HYDROCLEAN
SERIES



AUTOMATION
SERIES

Automation Series

- » **Rigid, single-piece aluminum frame** or multi-piece frame (for wider conveyors)
- » **Built-in tee slots** allow rapid accessory mounting
- » **Tension Release Tail** flips up at the push of a button for easy belt changes and under-belt cleaning
- » Available in **end drive, center drive and angled frame**



Industrial Series

- » **Single piece, tough steel frame** supports heavy loads
- » Available in **standard, heavy duty, indexing, plastic chain and embedded drive**
- » Available with **Lube-for-life bearings** for maintenance free operation

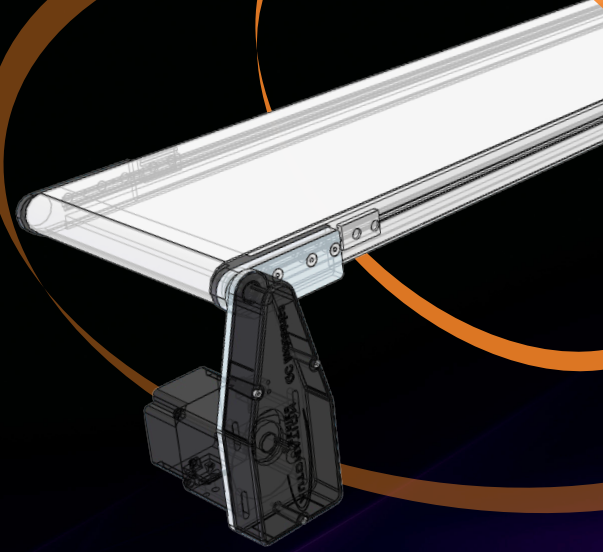
INDUSTRIAL
SERIES



24/7 Online Quoting

Configure and quote conveyors 24 hours a day using our online **Conveyor Configurator**. An intelligent assistant uses engineer-developed rules to make sure all your components — including drives, stands, and sides/guides — work together properly.

- » **Manage multiple conveyors** in a single quote using separate bills of materials
- » **Our algorithms identify any errors** and offer options for making corrections
- » Register your conveyor to qualify for our **10 Year Warranty**
- » Access appropriate **manuals and videos by serial number** to make maintenance easy
- » **View past orders and quote replacement parts** directly from the original bills of materials, complete with exploded views to help you find exactly the right part
- » **Download 3D CAD models** of your conveyor design
- » **Get started at qcconfig.com today!**



Conveyor Configurator

qcconfig.com



10 Year Limited Warranty

Our products are developed and tested with long-term reliability in mind. To ensure our conveyors will run problem-free in the field for many years, we demand the tightest tolerances in the industry and manufacture our components using the most advanced processes available. Each conveyor is inspected at several points of the manufacturing process to ensure quality, including a final operational test before it leaves our facility. That's why we confidently stand behind our products with a 10 year warranty when they're registered at qcconveyors.com/serial.

5 Day Lead Times

Many of our most popular conveyors are available with just a five day lead time. Several of our most popular belt options are available for quick shipment. Look for the Quick Ship icon in our Conveyor Configurator to guide your selections and ensure a five day lead time!



4057 Clough Woods Dr. | Batavia, OH 45103
(513) 753-6000 | qcconveyors.com