

INDUSTRIAL SERIES

IS125-FT

PLASTIC CHAIN CONVEYORS

IS125-FT plastic chain conveyors are built by modifying the versatile and reliable IS125 platform for heavier loads, higher speeds, longer conveyors.



FEATURES AND BENEFITS

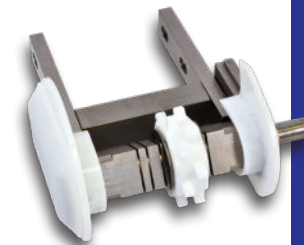
RIGID STEEL FRAME

Laser-cut, 10-gauge steel, single-body frame construction provides exceptional frame integrity. Available in a standard grey powder coated steel or stainless steel.



WEAR STRIPS

Each IS125-FT frame is outfitted with UHMW wear strips for smooth, quiet movement and continuous belt tracking. Three standard wear strips are available, with sides that either sit flush with the belt or extend above the belt height for product control.



DRIVE ASSEMBLY

These plastic chain conveyors have a unique sprocket drive assembly which allows for heavier loads, non-slip belt movement, consistent belt tracking and higher speeds.

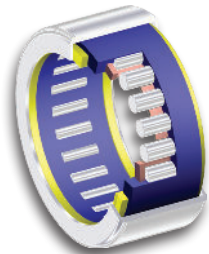


PLASTIC CHAIN BELTING

IS125-FT belts are 1" pitch modular belts, so the belt is built with multiple identical pieces linked together with plastic pins. We offer flush grid, flat top, and grip top in a variety of plastics including FDA, antistatic, chemical resistant, and heat resistant.

LUBE-FOR-LIFE BEARINGS

Lube-for-life bearings are precision roller bearings that offer greater load capacity, longer life, and utilize a solid lubricant that eliminates the need for re-lubrication for the life of the bearing.



APPLICATIONS

Automation

Assembly

Automotive

Material Handling

IS125-FT | Industrial Series



Width
4-24"



Length
up to 40'



Load
up to
500 lbs



Speed
up to
375 fpm



[QC CONVEYORS.COM](http://QCCONVEYORS.COM)
Visit our website for
more information about
our IS125-FT conveyors.

Visit qcconveyors.com for more information