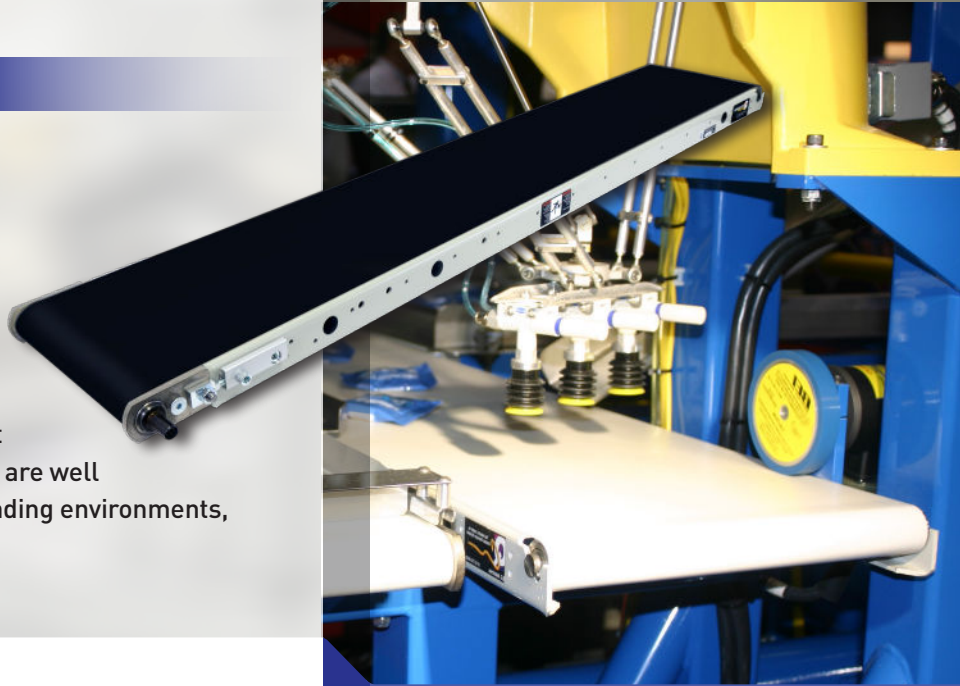


## INDUSTRIAL SERIES

# IS125

## FLAT BELT CONVEYORS

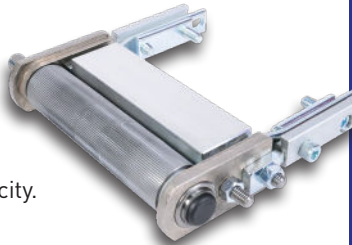


IS125 flat belt conveyors are versatile and reliable. The low, 1.89" profile, steel frame allows them to fit almost any application, including tight spaces. They are well suited to applications with heavier loads and demanding environments, like in metal working and automotive industries.

## FEATURES AND BENEFITS

### STAND-ALONE DRIVE ASSEMBLY

The straight knurl, stand-alone drive assembly guarantees bearing alignment and allows the conveyor to be tracked at the drive end. A straight knurl design prevents premature wear on the belt and creates enough friction for a heavier load carrying capacity.



### RIGID STEEL FRAME

Laser-cut, 10-gauge steel, single-body frame construction provides exceptional frame integrity. Available in a grey powder coated steel or stainless steel.

### SNAP-IN TAIL ASSEMBLY

The snap-in tail assembly is the key to the IS125's best-in-class five minute belt change. Thrust washers provide axial float to protect the bearings and letting the assembly to move with the natural camber of the belt.



### CROWNED PULLEYS

For superior belt tracking, the drive and tail ends of the IS125 are equipped with crowned pulleys, taking advantage of the natural tendency of belts to run centered on the longest part of the conveyor.



### LUBE-FOR-LIFE BEARINGS

Lube-for-life bearings are precision roller bearings that offer greater load capacity, longer life, and utilize a solid lubricant that eliminates the need for re-lubrication for the life of the bearing.

## APPLICATIONS

Automation

Assembly

Automotive

Metal Working

Material Handling

IS125 | Industrial Series



**5 DAY LEAD TIMES**  
Conveyors built with our most popular belt options qualify for our Quick Ship Program.



**CONFIGURE AND QUOTE ONLINE 24/7**  
Engineer developed rules make sure all your components work together properly.

 **Width**  
2-24"

 **Length**  
up to 12'

 **Load**  
up to  
450 lbs

 **Speed**  
up to  
316 fpm