
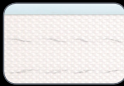




IS175-ID CATALOG

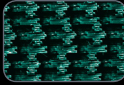
## Flat Belt Material Options


- 

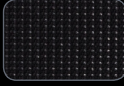
**MAA** – Multipurpose Belt  
**Surface:** Smooth, White Urethane  
**Anti-Static:** Yes
- 


**MAB** – Multipurpose Belt  
**Surface:** Smooth, Sealed Edge Urethane  
**Anti-Static:** Yes
- 


**MAE** – Multipurpose Belt  
**Surface:** Smooth, White Urethane  
**Anti-Static:** Yes
- 

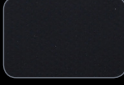
**FAA** – High Friction Belt  
**Surface:** Snakeskin, Grey PVC  
**Anti-Static:** No
- 


**FAF** – High Friction Belt  
**Surface:** Rough Top, Green PVC  
**Anti-Static:** Yes
- 


**AAA** – Accumulation Belt  
**Surface:** Fabric, White Urethane  
**Anti-Static:** Yes
- 

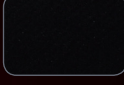
**AAC** – Accumulation Belt  
**Surface:** Fabric, Black Urethane  
**Anti-Static:** Yes
- 

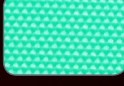
**IAF** – Cut Resistant Belt  
**Surface:** Dimple Top, Black PVC  
**Anti-Static:** Yes
- 


**EAB** – Multipurpose Belt  
**Surface:** Smooth, Translucent Urethane  
**Anti-Static:** Yes
- 


**EAC** – Multipurpose Belt  
**Surface:** Smooth, Translucent Urethane  
**Anti-Static:** Yes
- 

**PAB** – Multipurpose Belt  
**Surface:** Smooth, Translucent Urethane  
**Anti-Static:** Yes
- 

**PAD** – Multipurpose Belt  
**Surface:** Smooth, Translucent Urethane  
**Anti-Static:** Yes
- 

**PAE** – Multipurpose Belt  
**Surface:** Smooth, Translucent Urethane  
**Anti-Static:** Yes
- 

**TAA** – Multipurpose Belt  
**Surface:** Smooth, Translucent Urethane  
**Anti-Static:** Yes
- 

**TAB** – Multipurpose Belt  
**Surface:** Smooth, Translucent Urethane  
**Anti-Static:** Yes
- 

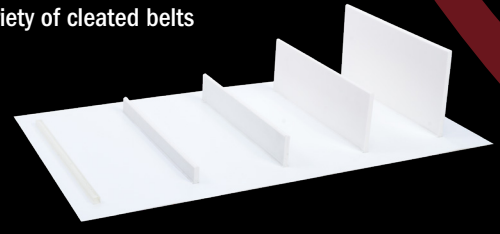
**RAE** – Multipurpose Belt  
**Surface:** Smooth, Translucent Urethane  
**Anti-Static:** Yes

More belt options available at [qcconfig.com](http://qcconfig.com)  
 Consult factory for Heat Resistant and Profile/Specialty Belts



## Belts for Any Application

More than 30 belt styles are available to fit your application, including a variety of cleated belts



## Reduced Downtime

The unique snap-in sealed tail assembly makes belt changes quick and easy. Lube-for-Life bearings eliminate the need to re-lubricate the bearing for the life of the bearing.



## Specifications

- » **Widths:** 12", 18", 24"
- » **Lengths:** 2' to 12'
- » **Speeds:** Incrementally variable from 7 to 50 fpm
- » **Motor:** Sealed construction design, IP-54 rating
- » **Motor Life:** 15,000 hours
- » **Load Capacity:** 12" – 50 lbs; 18" & 24" – 75 lbs
- » **Input Voltage:** 115vac / 230vac, 1ph
- » **Control Wire Lengths:** 12", 24", 48", 96"

# Save Space

IS175-ID conveyors offer maximum flexibility. Their embedded motor takes less space than traditional conveyor drive packages.

## Low Profile Design

Only 2.54" tall, these conveyors will fit almost any application.

## Safe, Efficient, Single Piece 24vdc Motor

Integrated internal gears give you maximum torque, speeds up to 50 feet per minute and loads up to 75 lbs. The integrated motor makes IS175-ID Conveyors maintenance-free, freeing you from lubricating bearings or drive packages. The motor's low voltage protects workers from dangerous currents.

## Easy Application Integration

The variable speed control card integrates easily with automation systems for "run-on-demand" applications, using inhibit/run controls from devices such as timers and photo-eyes. Lighted indicators identify status at a glance. The card can be frame-mounted or mounted in a NEMA 12 control box (shown at right).



## Controller Specifications

- » Variable speed (in increments) via dip switches
- » Run/Stop input
- » LED status indicators
- » Built-in thermal overload protection
- » NEMA Type 1
- » Accelerate/Decelerate Capable

# Side Rails & Flared Sides

SIDE RAILS & FLARED SIDES

## Fixed Side Rails

Side rails can be used to contain and guide product on the conveyors. They are available as 1/3", 1" (top left) and 2" . You may also order them with seals to keep product or contaminants from slipping under the belt (right) or with a ware strip to protect the sides and product from scuffs and marks (bottom left). Quotable through the Configurator.



## 2-Axis Adjustable Guides

Adjustable side rails offer the ultimate in flexibility. These guides may be adjusted vertically for varying product heights, or vertically as full width or indented guides. These guides are available with thumb screws (shown) for tool-less adjustments. Quotable through the Configurator.



## Flared Side Rails

Flared side rails utilize adjustable side rail attachments to guide falling products to the conveyor. They are traditionally used with cleated conveyors for product control. End stops may also be used to prevent product from falling from the tail section of the conveyor. A swing gate attached to the end stop also aids in guiding product and accommodates cleats up to 2" in height. Quotable through the Configurator.



QC CONVEYORS | QCCONVEYORS.COM

# Stands and Mounts

## Aluminum Stands

Aluminum stands are our most popular support option. They offer adjustability in an economical package.

No additional mounts are required. Note: Conveyors 4" wide and under will have the stand framework on the outside of the conveyor. The minimum height range for these conveyors is 12-15 inches.



### Cross Ties

Cross ties increase the stability of the stands. It is suggested that a set of cross ties is ordered for every 12' of conveyor.

Note: Aluminum stands sold separately.

### Outrigger Stands

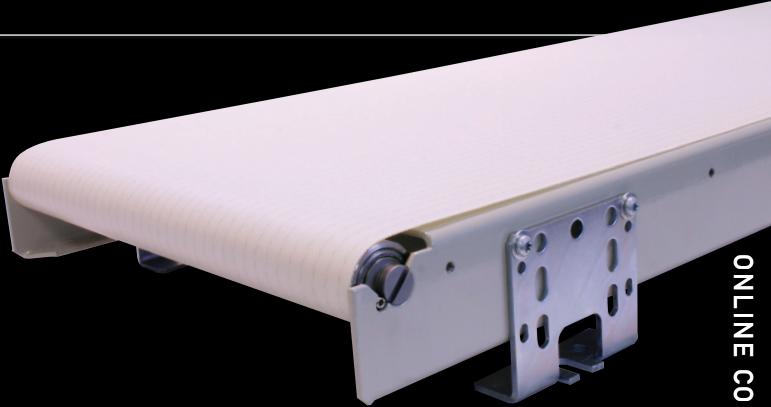
The Aluminum Outrigger Stand offers a wider base for enhanced stability, especially for narrow conveyors.

Note: No additional mounts are required.

## Universal Adjustable Side Mount

Frame Mounted version attaches directly to the frame with mounting holes every 3" (compatible with cleats 1" or lower). T-slot mounted version attaches to 1" Side Rails, 2" Side Rails, the Single T-slot and the Multi T-slot (compatible with cleats 1/2" or lower). Brackets are universal and work on either side of conveyor.

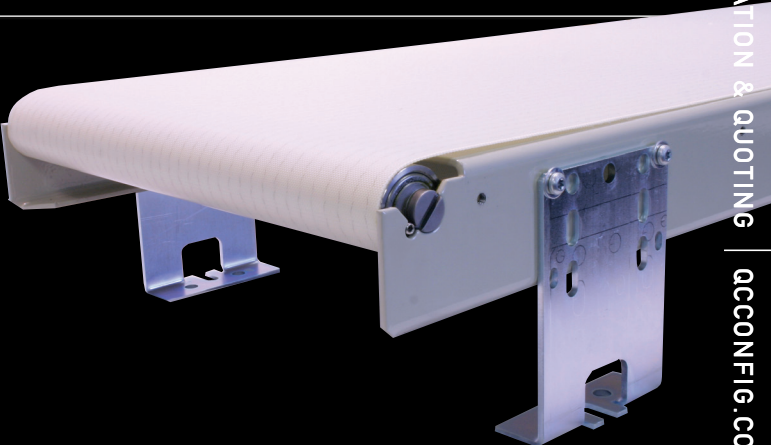
Adds 1.64" to top of belt height.



## Universal Raised Side Mount

Attaches directly to the conveyor frame. The frame has mounting holes every 3". Brackets are universal and can work on either side of the conveyor. Cannot be used with cleated belts.

Adds .135" to top of belt height



Note: There is a 3" overall height adjustment with feet. All applications will require the end user to properly lag stands and ensure stability. Because every application and installation is different, the functionality and performance of the supports depend on the end user. QC Conveyors can aid in determining the supports your application requires.

# Learn More

## Additional Products Available from QC Conveyors

In addition to our space saving IS175-ID conveyors, we offer a variety of other products. Other options in our **Industrial Series** include IS125 conveyors built for heavier loads and IS300 conveyors which feature a timing belt with accuracy to  $\pm.015"$ . **Automation Series** conveyors are built on a rigid aluminum frame, and **HydroClean Series** conveyors are built on a stainless steel platform with a design that makes them easy to clean. Please visit our website or contact your local distributor for more information.



### qcconveyors.com

QC Conveyors' website – [qcconveyors.com](http://qcconveyors.com) – is your resource for the most up-to-date information about all of our products.



### Conveyor Configurator

Request a quote for IS175-ID conveyors online, 24 hours a day.



### Your Local Distributor

Contact our sales department today at (513) 753-6000 to find your local distributor.



(513) 753-6000 | [qcconveyors.com](http://qcconveyors.com) | Part # MKTG-IS175-ID-0119



THE DURAVANT FAMILY OF COMPANIES

[www.duravant.com](http://www.duravant.com)

ARPA | FISCHBEIN INTERNATIONAL | FMH CONVEYORS | HAMER-FISCHBEIN | KEY TECHNOLOGY | MARLEN INTERNATIONAL | MESPACK | OHLSON | QC CONVEYORS

IS 175-ID CATALOG